

RECYCLES

Centre County



Centre County Solid Waste Authority
235 Transfer Rd.
Bellefonte, PA 16823
(814) 238-7005

Transfer Station Hours
Mon. thru Sat. 8 a.m. to 4 p.m.

Recycling Hours
Mon. thru Fri. 8 a.m. to 4 p.m.

Recycling & Illegal Dumping
Hotline
(800) 605-6649

www.centrecountyrecycles.com

Household Hazardous Waste Collection

Here's your chance to rid your home of old or unwanted hazardous chemicals and be sure of their proper disposal.

When: Friday, May 6th 10 a.m. - 6 p.m.
Saturday, May 7th 9 a.m. - 3 p.m.

Where: Centre County Solid Waste Authority
253 Transfer Rd.
College Township



Insecticides, weed killers, pool chemicals, cleaners, poisons, corrosives, flammables, oil-based paints and most other household hazardous chemicals will be collected. **NO** used motor oil or filters, antifreeze, batteries, tires, latex paint, radioactive or medical material, explosives, ammunition, ordnance or compressed gas cylinders will be accepted.

Household Hazardous Waste Collected Includes:

| | |
|------------------|----------------------|
| Insecticides | Pool Chemicals |
| Weed Killers | Cleaners |
| Corrosives | Flammables |
| Oil-based Paints | Mercury Thermometers |

Proper disposal protects your children and pets, the environment, our ground and surface water supplies and waste water treatment plants. It also protects emergency responders who may not be aware of chemical hazards present in your home.

This program is being made possible by the cooperative efforts and financial support of the Centre County Local Emergency Planning Committee, Centre County Solid Waste Authority, Pennsylvania Department of Agriculture, Pennsylvania Department of Environmental Protection, Penn State Cooperative Extension and other state and local agencies, municipalities and businesses.

The first 150 people to bring in mercury fever thermometers will receive a Wegman's coupon good for a free digital fever thermometer. You may bring as many mercury thermometers for disposal as you wish, but this offer is limited to one coupon per vehicle.

If you have questions about the disposal of specific materials, call the Centre County Solid Waste Authority at 238-7005 or the Penn State Cooperative Extension at 355-4897.

Commercial Recycling

Did you know American businesses generate enough paper to circle the globe at least 40 times or that 60 % of all plastic products and packaging produced in the U.S. are used by American businesses? As a matter of fact, the majority of waste produced by businesses can be recycled.

Recycling is both environmentally responsible as well as a cost-effective method to reduce waste. Environmentally, recycling saves landfill space and reduces pollution. Using reclaimed materials in manufacturing is often less expensive and requires less energy. The lower the energy required in manufacturing the lower the pollution produced.


Along with these environmental benefits, recycling is an excellent way to reduce costs. In 2003, Centre County businesses recycled 79,325 tons of materials. At \$56 a ton, disposal costs for those materials would have been over \$4 million. What a savings! Cost avoidance is often the biggest recycling benefit for most companies.

As well as being environmentally responsible and cost-effective, recycling is the law depending on where your business is located. Pennsylvania law mandates businesses located within the Centre Region to recycle. According to

The Municipal Solid Waste Planning, Recycling and Waste Reduction Act (Act 101), businesses located in municipalities with populations greater than 5,000 and with population densities over 300 persons/mi² are required to recycle. In Centre County these mandated municipalities are State College and Bellefonte Boroughs, College, Patton and Ferguson Townships. Harris and Spring Townships are mandated through local ordinances. If your business is located within these seven municipalities, it should have an onsite-recycling program.

The Centre County Solid Waste Authority (CCSWA), through your local trash hauler, offers a commercial recycling program to businesses located within any of the seven mandated municipalities. If your business is located in any of those municipalities and doesn't have a recycling program, call your local trash hauler. Your trash hauler, together with the CCSWA, will work with your business to start a recycling program by providing helpful recycling tips as well as supplying the necessary recycling bins and placing your business on their commercial routes.

How old is your paint?

 Do you have leftover paint? How long has it been in storage? Wonder if it is usable? Oil-based paints are good for up to 15 years. Latex paint is good for up to 10 years if it has not been repeatedly frozen and thawed. Latex paint is usable if it mixes when stirred. After you stir the paint, brush it on some newspaper. If you do not see lumps, then your latex paint is usable.

Latex Paint Disposal

Did you know that dried latex paint is not household hazardous waste? In 1997 latex paint products were tested using United States Environmental Protection Agency procedures and protocols. Testing results found dried latex paint did not meet any of the requirements to be considered hazardous according to the United States Environmental Protection Agency hazardous waste standards.

Unable to save, use up, donate or exchange your leftover latex paint? Disposal is your last resort. Please dispose of your leftover latex paint properly. Since dried latex paint is not hazardous, it can be easily disposed of in your household trash.

Paint is hazardous in its liquid form. To dispose of latex paint properly, it must first be air dried. If only a small amount of paint is left, simply remove the lid (outside, with good ventilation) and let dry. Then the can

may be put out for trash disposal or if recycling is available, the can may be recycled with metal cans. If you have too much paint for drying, there are various ways to dispose of paint.

For larger quantities of paint, mix an absorbent material (like shredded newspaper or clay-based kitty litter) and paint into a sturdy cardboard box. Stir and let dry. The end product will be similar in texture to the absorbent material. After mixture is dry, place it and cardboard box inside a tightly sealed garbage bag. Another option is a paint hardener. Paint hardeners can be purchased at paint/hardware stores.



Don't forget to recycle your empty paint can.

Latex Paint vs Oil-Based Paint

Paints are either latex (water-based) or oil-based. Don't know what type you have? Here are two easy ways to help you tell the difference.

Read the label

- For oil-based paint, you'll often see the words "alkyd" or "solvent-based" on the label.
- Clean-up instructions on the label are another way to tell whether a product is oil-based. If the label says to use mineral spirits or turpentine to clean your brush or roller, then the product is oil-based. If clean-up instructions say to clean your brush or roller with soap and water, it is typically latex paint.
- If label is missing or unreadable, you should assume it's oil-based for disposal purposes.

Does Paint Dissolve in Water?

- Put a small amount of paint in a jar or cap and mix with water. If it's latex paint, it will readily mix with water. Since latex paint is water-based, it will become thinner as water is added. If it's oil-based paint, it won't dissolve in water. The paint and water will separate like vinegar and oil.

Centre County Solid Waste Authority Welcomes New Enforcement Officer

In December 2004, the Centre County Solid Waste Authority (CCSWA) employed Merle Wertz, Jr., as their new Enforcement Officer.

As Enforcement Officer, Wertz is responsible for implementing the requirements of the Centre County Municipal Waste Management Ordinance; handling illegal dumping complaints; conducting investigations and prosecutions; cleanup of dumpsites in Centre County; and performing educational activities relative to illegal dumping.

A native of Centre County, Wertz joined the Air Force immediately after graduating from Penns Valley High School and served as an officer in the Law Enforcement Canine Unit. During his service he was stationed all over the world, including bases in the Philippines, Guam and Japan. Shortly after his honorable discharge from the Air Force, Wertz moved back home from his final post in North Carolina. Once back in Centre County, he served as a correctional officer at the Centre County Prison.

Wanting the CCSWA's Enforcement Officer to have a more visible presence in Centre County, Wertz will be involved in educating residents on responsible solid waste management practices and anti-littering campaigns. He plans to be proactive as well as fair and consistent in enforcing regulations regarding illegal dumping. "You get more with honey than vinegar", says Merle.

Green Cleaning

Many household cleaners are considered to be household hazardous waste (HHW) and can cause environmental problems if disposed of improperly. To reduce the amount of HHW in your home, use less environmentally harmful alternatives that you can make from common household ingredients.

All Purpose Cleaner--Mix one teaspoon of borax with one quart of warm water. Add a splash of lemon juice or white vinegar to cut grease.

Glass Cleaner--Mix one part water to one part white vinegar in a spray bottle. Due to the waxes used in some commercial cleaners, streaking may occur the first time you use this solution. Remove streaks with a little rubbing alcohol and then clean with All Purpose Cleaner.

Spring Holiday Recycling Schedule

Memorial Day

Bellefonte and State College Boroughs

Residential recycling normally collected on Monday, May 30th will be picked up on Wednesday, June 1st.

College, Harris, Ferguson & Patton Twp.

Residential recycling will be pushed back one day from Monday on, for the rest of the week (recycling normally collected on Monday will be collected on Tuesday, and so on through the week).



Got Paint?

Six-Point Program for Leftover Paint

Two gallons of household paint is sold per person in the United States yearly. Too much of the leftover paint from home improvement projects is needlessly thrown away in our landfills. You are the key to reducing the amount of paint entering our landfills. By following these six steps, recommended by the National Paint and Coating Association, you can reduce the amount of leftover paint ending up in our nation's landfills every year.

1. Buy Only the Paint You Need

Always buy what you need, to reduce the chance of having paint leftover. This practice is called "source reduction." Source reduction helps protect the environment and saves money.

2. Store Paint So It Lasts for Years

Cover the opening of the paint can with plastic wrap. Make sure the lid fits securely so the paint doesn't leak. Here's the key step: store the paint can upside down. The paint inside the can will create a tight seal around the lid, keeping the paint fresh until you need it again.

3. Use Up All Your Paint

Now that your paint is stored, don't forget about it. Leftover paint can be used on touch-up jobs and smaller projects. Blend or mix smaller quantities of similar colors of latex paint to use as a primer on larger jobs.

4. Recycle Empty Paint Cans

You can recycle your empty paint cans with your other metal cans. Empty plastic paint cans are not recyclable and should be placed in your regular trash.

5. Donate or Exchange Your Paint

If you can't use your leftover paint, maybe someone else can. Donate your paint to your neighbors or community service or church groups. You can also participate in a waste exchange. Check out www.materialtrader.org. Material Trader is a free online service offered by the Pennsylvania Small Business Development Center to help promote the exchange of reusable materials that have traditionally been discarded as waste.

6. As a Last Resort... Dispose of Paint Properly

If you can't find anyone to use your paint, dispose of it. When dried, latex paint is not considered hazardous waste and can be safely disposed of in your household trash. See page 2 for instructions on how to safely dispose of latex paint in your trash. Oil-based paints are considered household hazardous waste and must not be thrown away in your trash or dumped down the drain. Your oil-based paints can be properly disposed of during a Household Hazardous Waste Collection to be held at the Centre County Solid Waste Authority May 6 and 7, 2005. For more information on the 2005 Household Hazardous Waste Collection, call the Centre County Solid Waste Authority at (814) 238-7005 or visit our website, www.centrecountyrecycles.com.

Great PA Cleanup

Want to live, work and play in a clean, litter-free community? The 2005 Great Pennsylvania Cleanup is scheduled for Saturday, April 23. Last year more than 182,000 Pennsylvanians participated in more than 5,100 organized Great Pennsylvania Cleanup projects, removing more than 233,000 bags of trash from Pennsylvania communities. In addition, PennDot coordinated the efforts of almost 100,000 volunteers from nearly 4,400 civic-minded groups that collected another 191,000 bags of trash from over 9,000 miles of state-maintained roadways.

Want to participate in this year's cleanup? Check out the Great Pennsylvania Cleanup website at www.dep.state.pa.us and click on the "Great Pennsylvania Cleanup" logo. Interested individuals can also call toll-free at 1-888-548-8372 for more information.



Events and Cleanups

Recyclers Unite for the 4th Annual Trash to Treasure Sale

Penn State University and the Centre County United Way will hold their annual Trash to Treasure Sale at Beaver Stadium, Gate B on Saturday, May 28th from 7:30 a.m. to 3 p.m. The Trash to Treasure Sale features the sale of usable items donated by Penn State students living on campus at the end of spring semester. Last year's event generated \$54,673 for the Centre County United Way, diverted over 73 tons of garbage from the landfill, and gave 6.34 tons of food to county emergency food programs. This unique and award winning event features hundreds of pieces of furniture, high quality clothing, housewares, electronics, and much more. Volunteers are also needed to help sort donations starting May 6th. For more information, contact Connie Schroeder, Centre County United Way, 238-8283, connie@ccunitedway.org.

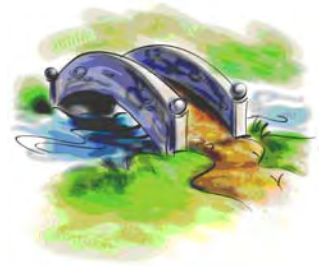
AAUW Used Book Sale

Love to read? The AAUW Used Book Sale will be held May 7-10, 2005 from 9 a.m. to 9 p.m. at the Ag Arena. Over 250,000 books, paperbacks, maps, sheet music, CDs, tapes and special magazines are available for purchase. Bring your own containers for your purchases.



Spring Creek Watershed Cleanup Day 2005

On April 23rd the Clearwater Conservancy will be sponsoring Watershed Cleanup Day 2005. Due to the flooding from last year's Hurricane Ivan, the focus will be on the banks of our creeks and streams. This year's cleanup will take care of the trash and debris washed up along the banks and in the vegetation. If you know of any sections of stream in need of cleanup or want to volunteer for the day, email Brooks Parker at brooks@clearwaterconservancy.org. On last year's Cleanup Day, 225 volunteers collected 36 tons of trash from roadsides, springs, and sinkholes located throughout the Spring Creek Watershed.



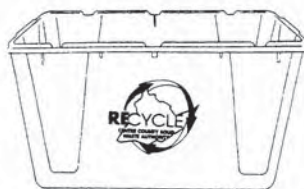
Hello Philipsburg! The Centre County Solid Waste Authority wants to welcome you to the *Centre County Recycles* family. You will receive the Authority's newsletter, *Centre County Recycles* in the *Philipsburg Journal*. Our quarterly newsletter provides you with valuable information on local recycling opportunities as well as environmentally responsible tips on the disposal of your trash. If you have any questions about our newsletter please contact us at (800) 605-6649 or wasted5@uplink.net.

Material Trader

Currently planning a construction project and need materials? Or did you already complete your project and have leftover materials? Check out www.materialtrader.org. Material Trader is a free online service offered by the Pennsylvania Small Business Development Center to help promote the exchange of reusable materials that have traditionally been discarded as waste.



Guide to Curbside Recycling



Centre County Solid Waste Authority

| | | |
|--|-----|---|
| Glass •rinse •remove lids, discard •labels may remain | YES | Clear, green and brown bottles and jars |
| | NO | Drinking glasses, window glass, ceramics, light bulbs, dishes, mirrors |
| Cans & Foil •rinse •remove lids, place inside can •labels may remain | YES | Aluminum, steel and tin food and beverage cans, EMPTY aerosol cans, EMPTY paint cans, TV dinner trays, disposable pie pans, aluminum foil |
| | NO | Scrap metal, pots/pans, siding, chair legs |
| Plastics •rinse •remove caps •flatten | YES | Narrow-neck plastic bottles only. It can only be recycled if the bottle has a neck & screw top (Ex. milk jugs, soda bottles, shampoo, etc.) |
| | NO | Cottage cheese, margarine, or yogurt containers, plastic cups, toys |
| Newspapers & Phone Books •stack in a paper grocery bag or tie with string | YES | Clean, dry newspaper, including inserts, phone books |
| | NO | Wet or yellowed newspaper, cereal boxes; do not mix with magazines or office paper |
| Magazines & Catalogs •bundle securely with string or twine | YES | Magazines, catalogs, glossy paper |
| | NO | Books of any kind; do not mix with newspaper or office paper |
| Mixed Office Paper •place in a separate paper bag, remove paperclips and tape | YES | Lined and unlined paper: writing, colored bond, typing or copy, computer paper and envelopes |
| | NO | Keep separate from newspapers and magazines |
| | NO | Blueprints |
| Corrugated Cardboard •break down boxes •place in a separate paper bag or bundle | YES | Clean, dry, corrugated cardboard |
| | NO | Cereal boxes, waxed, oily or wet cardboard, plastic inserts, pizza boxes or Styrofoam® peanuts |

Chairman
Charles L. Frazier

Vice Chairman
Fredrick J. Gutskey, Jr.

Secretary
Tom Bowes

Treasurer
Aileen Homan

Board Member
Robert F. Custard

Board Member
John H. Auman

Board Member
Martin Horn

Executive Director
Ted W. Onufrak

*Deputy Executive Director/
Recycling Coordinator*
Joanne Shafer

Operations Manager
Daniel R. Dixon

Office Manager
Pamela Faust

Administrative Coordinator
David Immel

Education Coordinator
Helena Jones

Enforcement Officer
Merle Wertz, Jr.

Centre County Recycles is a quarterly newsletter published for Centre County residents as a source of information regarding recycling and environmental issues. Centre County Recycles is printed on at least 30% RECYCLED CONTENT PAPER with soybean based inks AND IS RECYCLABLE. If you have any comments or would like to make a suggestion, please call 238-6649 or e-mail us at wasted5@uplink.net

Offset Printed by Print-It Plus.

This publication is partially funded by an Act 101 Recycling Grant through the



Pennsylvania Department of Environmental Protection.
www.dep.state.pa.us

Edward G. Rendell, Governor
Commonwealth of Pennsylvania
Kathleen A. McGinty, Secretary
Department of Environmental Protection

Remember: If It Is Not Properly Prepared, It Is Still Trash!

Centre County Solid Waste Authority (814) 238-6649
or visit us on the web at www.centrecountyrecycles.com

Clip and post on your refrigerator!

